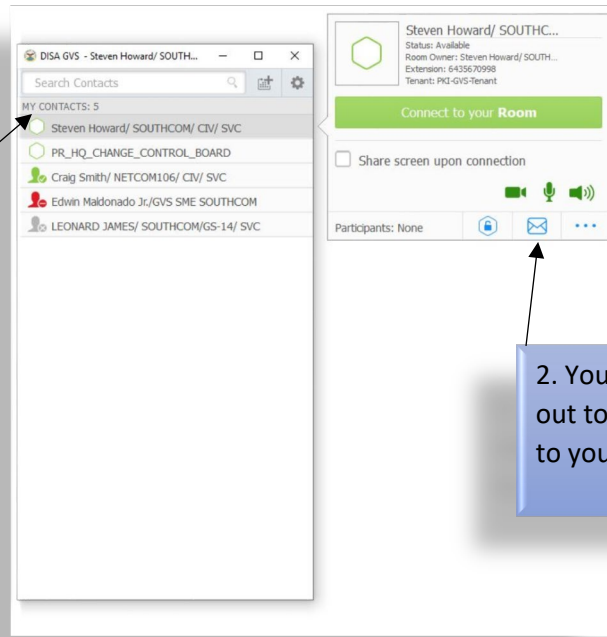


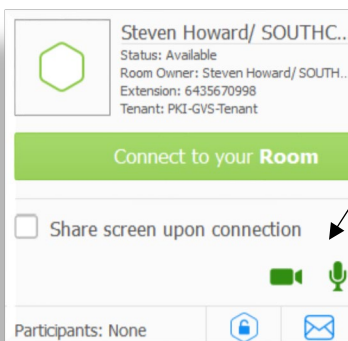
MANAGING YOUR GVS PERIPHERIALS

1. When in GVS: Click on your name which should be at the top of your GVS contacts.

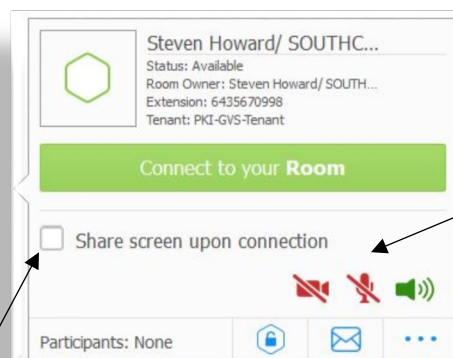


2. You'll see a window pop out to the right to connect to your personal room.

3. Click on the green 'camera' and 'mic' logos.



4. They should go red with a slash through them. This will default mute you on any room



*****Note1: Please never check the box "Share screen upon connection"**
*****Note2: If it's a person to person (p2p) call, by accepting you automatically open your devices*****